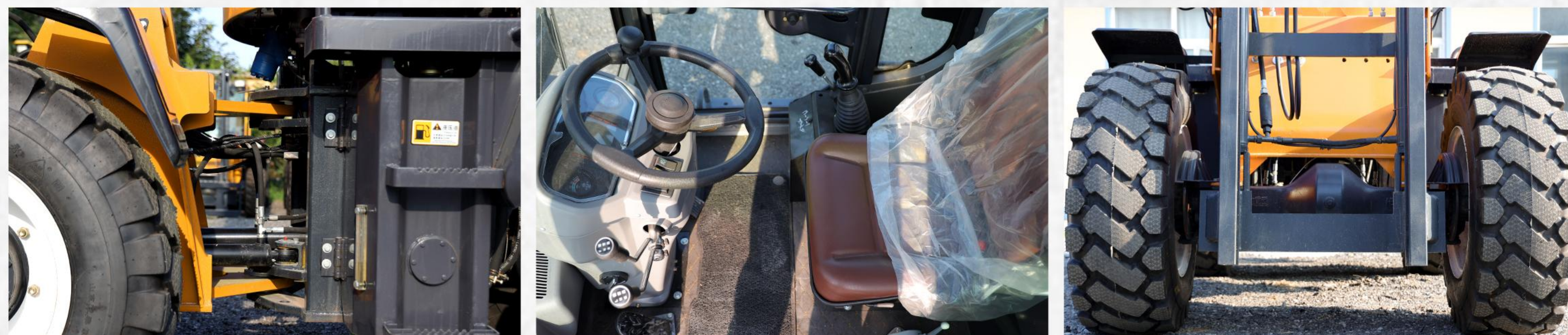


**FORKLIFT**

**XHD50**

**XHD**



## 5 TON ALL-TERRAIN FORKLIFT

SUITABLE FOR ALL TERRAINS



### XHD50 PRODUCT PARAMETERS

Rated Lifting Weight	5000KG
Rated Lifting Height	3000-6000 mm
Turning Radius	4500mm
Front end Clearance	300-380mm
Wheelbase Center Ground Clearance	350mm
Climbing Angle	≤35°
Engine Type	YUNNEI (76KW)
Driving Mode	Four-wheel drive
Transmission Model	280 Dual high and low speeds Torque converter
Axle Type	Big wheel Side bridge
Tyre Type	16/70-20 Tires
Frame Width	1800mm
Frame	Hinged thickness 350 mm
Fork Length	1520 mm (optional)
Machine Weight	5500 KG
Overall Size	4400*1900*2900mm

### FEATURES

All-Terrain Forklift are engineering vehicles that can safely and efficiently carry out loading, unloading, stacking, and handling operations on slopes and uneven surfaces. Like a balanced forklift, it can install forks or replace various attachments to improve operational efficiency.